



共用数据导向的分布式系统失效注入

高钰, 王栋, 戴千旺, 窦文生, 魏峻

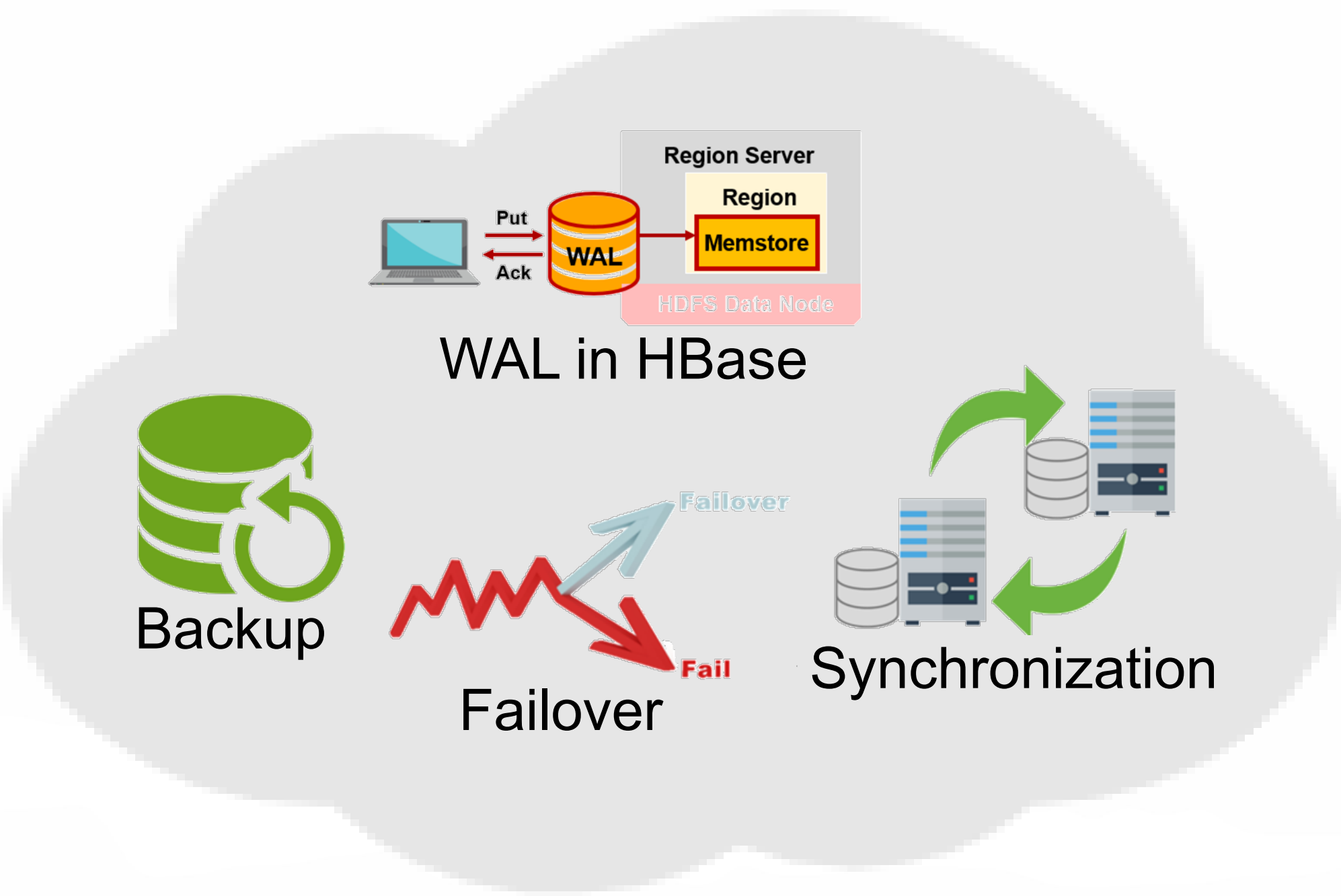
Common Data Guided Crash Injection for Cloud Systems

The 44th ACM/IEEE International Conference on Software Engineering (ICSE Demo'22)

联系方式: 高钰, 18810118727, gaoyu15@iscas.ac.cn

Crash Recovery

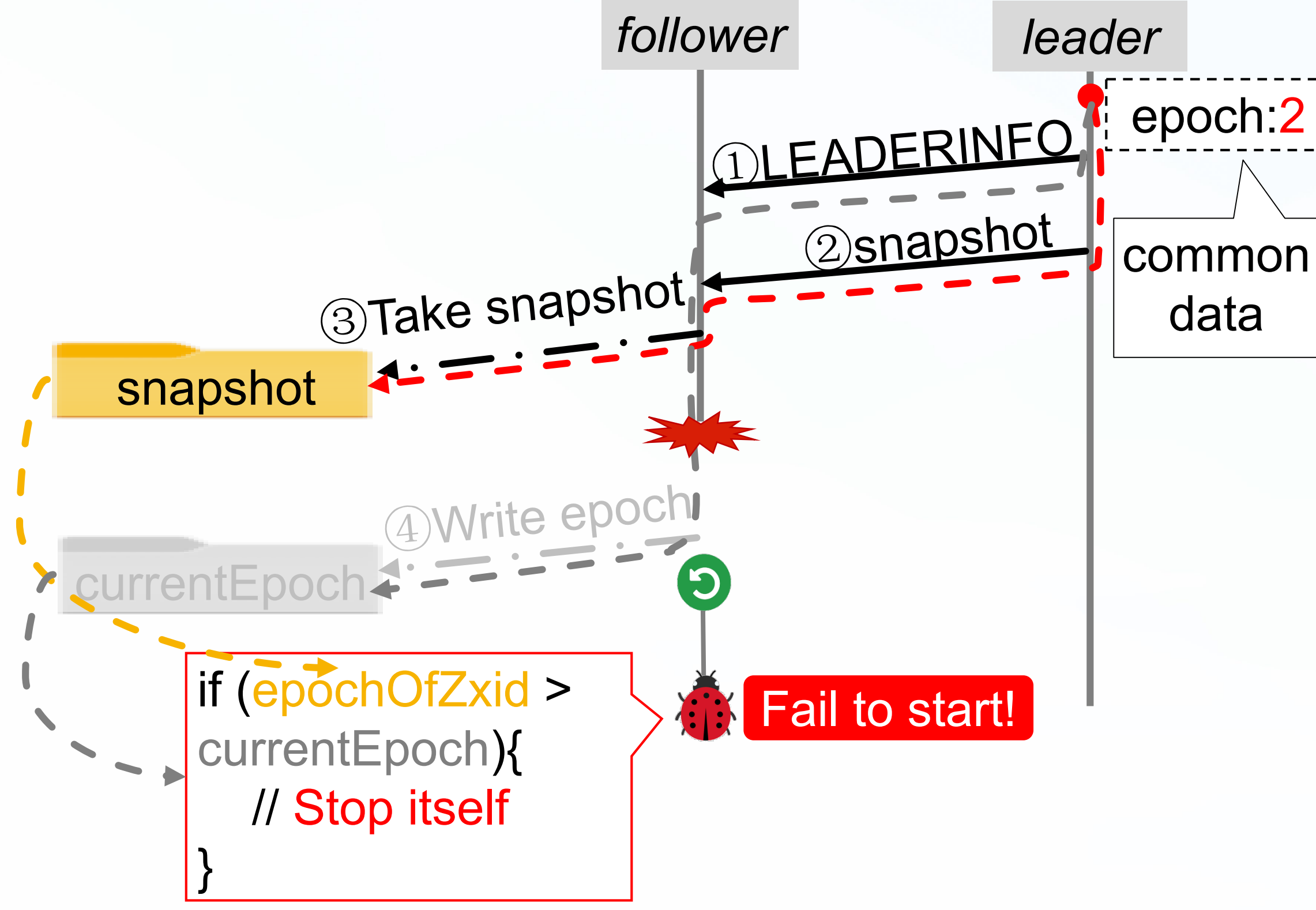
- Crash recovery protocols are designed to combat node crashes.



- Node crashes are inevitable.
- Recovery must be a first-class operation of cloud systems.

Crash Recovery Bugs

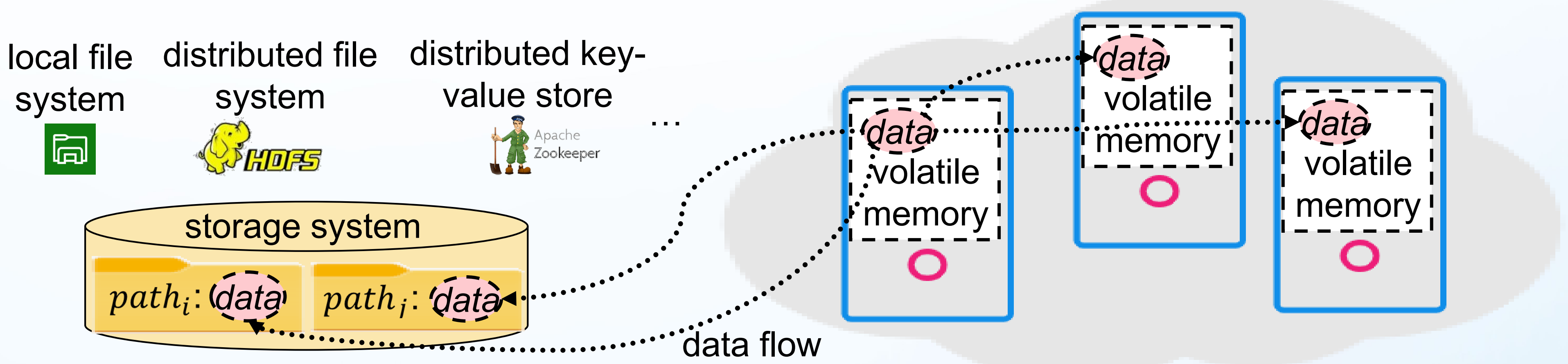
- Crash recovery code can be buggy.



- In this real-world bug from ZooKeeper, operation ③ and ④ store common data *epoch* to two different files.

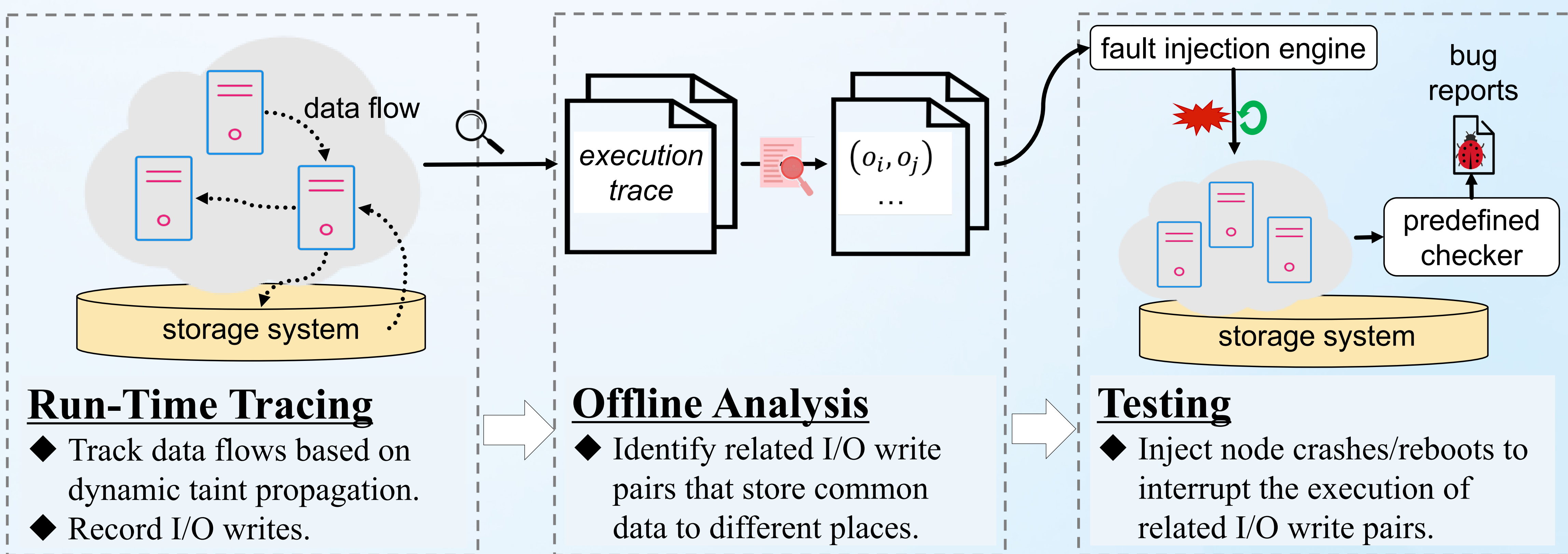
Key Observation

- A node can store common data to multiple places.
- Node crashes can leave a cloud system in inconsistent states, which are more likely to trigger crash recovery bugs.



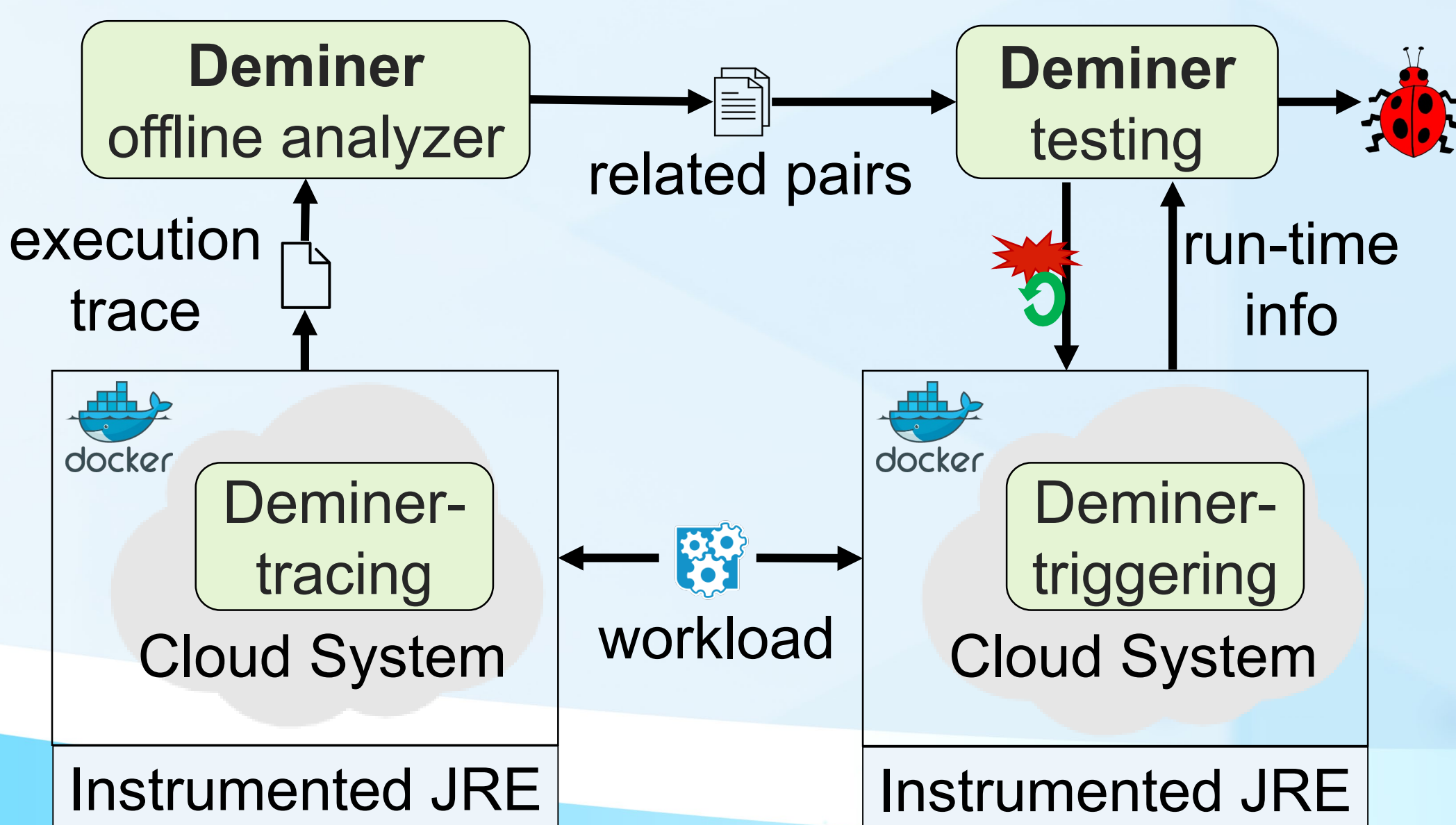
Deminer

- Automatically expose crash recovery bugs in cloud systems guided by common data.



Deminer Usage

- Deminer is implemented as an easy-to-use command line tool.



Deminer Evaluation

- Deminer has detected 6 crash recovery bugs on three popular cloud systems.

Bug ID	Failure Symptom
hb26370	Misleading error message
hb26391	Data staleness
hb26420	Cluster out of service
zk4283	Node downtime
zk4416	Node downtime
hd16381	Operation failure

